



soften<sup>®</sup>AIR

ACOUSTIC SOLUTIONS

YOU CAN FEEL THE DIFFERENCE...

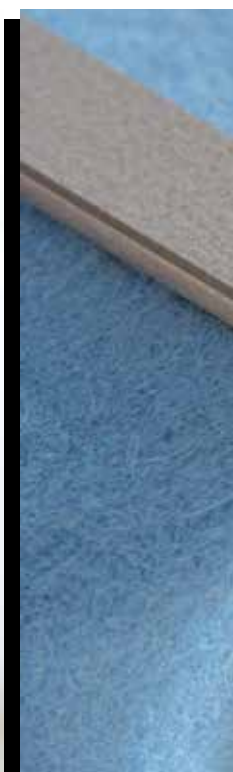


# soften<sup>®</sup>AIR

Light as a feather. Or feet firmly on the ground. hilariously colourful. Or elegantly subdued. A pleasant acoustic environment is essence to the ears and music to the mind but also a source of visual inspiration.

Colours will lift your spirits and have a lasting effect on your mood and state of mind. An elegant grey or soothing beige have their place but a vibrant and unexpected colour can be refreshing like a cool drink – large or small – on a hot day.

Feeling good is actually quite simple. When the senses are satisfied and at rest – what else can you ask for?







**Soften Air** is a high-end acoustic element for interior design. Easy to install and modify, and when needed also easy to move and adapt to new uses. Soften Air elements will smoothly assimilate into the space - divide it or expand it.

**Soften Air** is light to handle but sturdy in its role as a peacemaker in noisescapes and as a complement to interior designs in homes or public spaces.





# soften<sup>®</sup>AIR

## Soften Air partition element

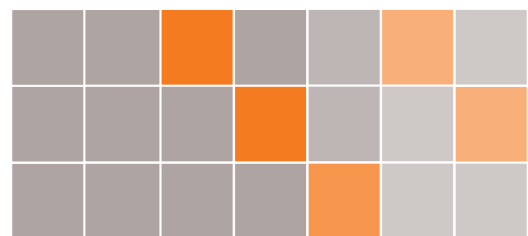
Effective sound absorber,  
Absorption class A  
(EN ISO 11654)  
Panels on both sides of the  
element. Furniture sheet in the  
middle.

## Choose suitable size:

Width 1 module or more.  
The width of the element can be  
modified afterwards:  
The element can be divided into  
several separate elements (apart  
from table screen).  
Max. element height: 4 modules.

Weight 12 kg/ m<sup>2</sup>  
(sheet + panels)

1 module = 55 x 55 cm







### Installation:

Wire suspension, free-standing or desk-fixed element.  
Wire suspension element can be hung to any height.

### Choose:

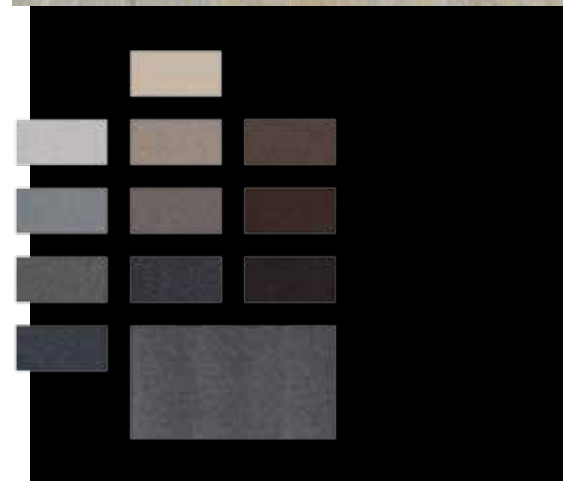
Any panel type sized 55 x 55 cm

Any color of multiple Soften-color options.

### Combine colors freely!

Rotate panels or change their places freely on the element.  
Panels are easy to loose and reattach.

Installation of wire suspension elements always to the supportive structure of the building.





soften<sup>®</sup> AIR

ACOUSTIC SOLUTIONS